

# NÉ DŪGŪZEDĪTCHĪ - WE ARE TALKING TO EVERYONE ABOUT IT

Official Newsletter of the Dena Kayeh Institute

Click on the  
newsletter title  
to learn how to  
say it in  
Dene K'éh!

## This Issue:

Dene K'éh Kusān  
Updates

PAGE 2-6

Dane Nan Ye'Dāh  
Network Updates

PAGE 7-8

DKI Initiatives

PAGE 9

## Message from Executive Director

We are pleased to share the latest edition of the Né Dūgūzeditchī Newsletter. Spring has arrived in Dena Kayeh, and we couldn't be happier to welcome the new season with an update on the important work taking place across our communities.

Over the past few months, our team at Dena Kayeh Institute has been working hard to advance our land stewardship priorities. We've hosted community meetings, engaged in leadership sessions, and participated in conferences to share and strengthen our Nation's vision for Dena Kayeh.

A particularly proud moment came in March, when we supported and witnessed the incredible leadership of our Elders as they gathered in Whitehorse for three powerful days to begin shaping a National Elders Council. Their voices continue to guide our path forward.

As we look ahead, we remain committed to doing this work in the Kaska way where we are rooted in culture and care for the land. None of this would be possible without the knowledge and strength of our Elders, the support of our communities, and the dedication of everyone involved in this shared work.

We hope you enjoy the updates in our spring newsletter and stay tuned for the upcoming launch of our refreshed website later this spring, [www.denakayeh.com](http://www.denakayeh.com)!

Shówe sénlá'

Corrine Porter - Executive Director

To Sign Up for Our  
Newsletters Please Visit  
our Website!

## Contact Information

For more information about DKI and the initiatives we support in the Kaska communities, please contact us at: [info@denakayeh.com](mailto:info@denakayeh.com) or at our emails below:

**Corrine Porter**  
Executive Director  
[denakayeh@gmail.com](mailto:denakayeh@gmail.com)

**Gillian Staveley**  
Director of Culture and Land  
Stewardship  
[gnstaveley.dki@gmail.com](mailto:gnstaveley.dki@gmail.com)

**Tanya Ball**  
Land Guardian Coordinator  
[dki.gistech@gmail.com](mailto:dki.gistech@gmail.com)

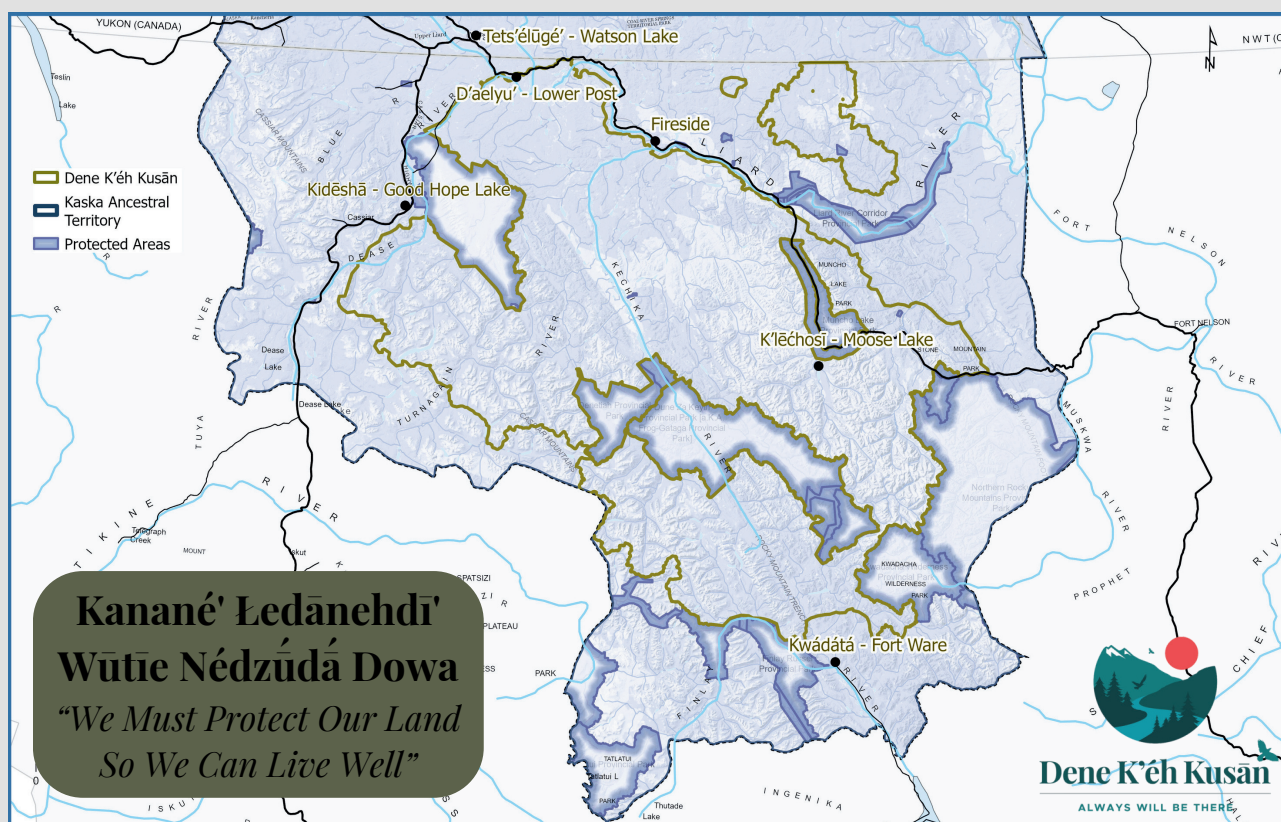


## Dene K'éh Kusān Update

This late winter and spring, our team has continued to advance the Dene K'éh Kusān IPCA (Indigenous Protected and Conserved Area) proposal through meaningful engagement and community dialogue. A central part of this work has been listening to the voices of Kaska community members, whose insights are shaping the path forward.

Through our engagement series, we've explored important questions together: How do we care for the land in ways that reflect our laws, knowledge, and cultural values? What does Kaska-led stewardship look like in practice? How can we build a co-management approach that ensures Kaska decision-making is strong and respected? And how do we secure long-term conservation financing to sustain the IPCA and support the vision of our communities for generations to come?

As one community member shared, “Stewardship is our collective responsibility—by caring for the land as our ancestors did, we can ensure that our people, culture, and territory will remain resilient.” These words reflect the heart of our work. Together, we are building an Indigenous Protected and Conserved area grounded in Kaska governance, responsibility, and enduring relationship to Dene K'éh Kusān.







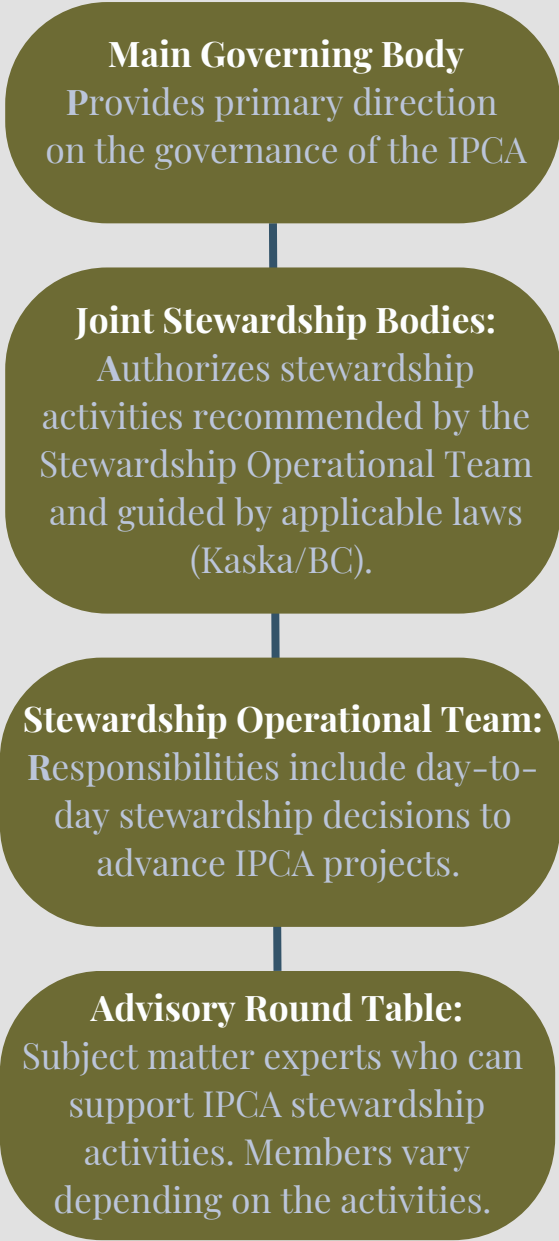
The Governance Structure of Dene K’eh Kusān is of utmost importance to ensure that the Kaska communities are part of the decision-making for the protected area. As part of community engagement, our team has been listening to feedback from our elected leadership and elders and Kaska members on what structure works the best for this area. To design collaborative stewardship, we have developed a governance structure option that empowers Indigenous leadership and partnerships to guide and implement IPCA stewardship.

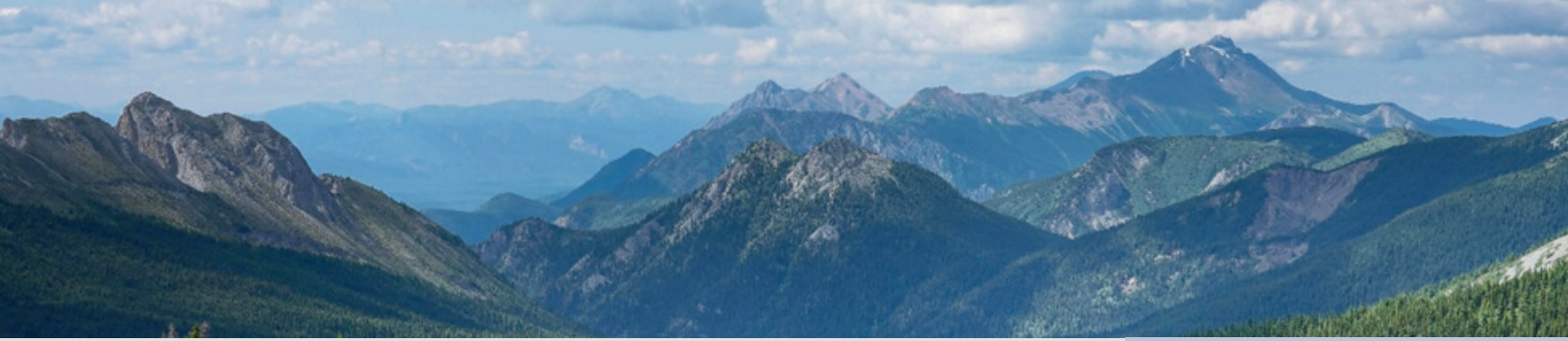
This graphic shows the four main levels we are proposing to support effective decision making for Dene K’eh Kusān. The main governing body is represented by Kaska leadership, followed by the joint stewardship bodies which the BC Government and our co-management partners represent. At the operational level, the stewardship operation team carries out the day-to-day implementation of the IPCA supported by advisory experts, community members and, existing wildlife boards or stakeholder groups.



**Kanané’ Kak’éh K’ídzedah**  
“On our land we follow our ways”

# Dene K’eh Kusan Stewardship Governance Structure



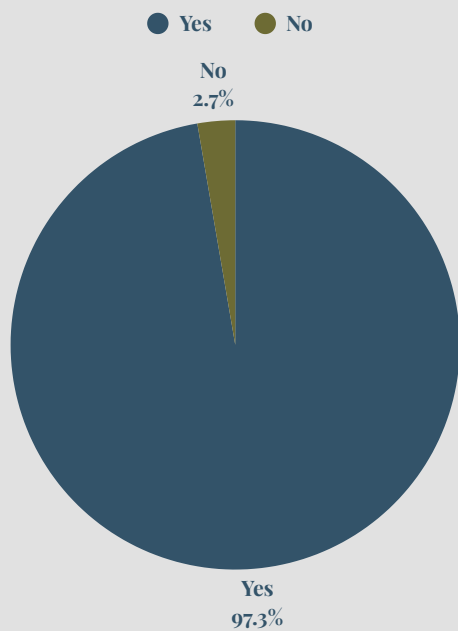


# What We Heard - Survey Results

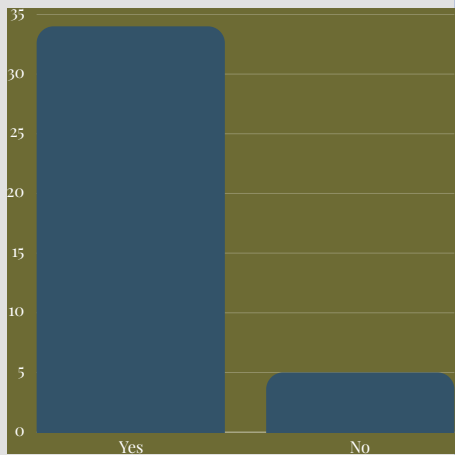
To highlight the voices and perspectives shared during our community engagement sessions and surveys, we're excited to share some of the feedback we've received so far from over 40 of our members.

These insights reflect how Kaska members envision stewardship of Dene K'éh Kusān and offer guidance on the values, priorities, and approaches that should shape the future of this protected area.

## Do You Support Kaska Cultural Tourism in DKK?



## Should Land Guardians Have A Role In The Management Of DKK?



## There is Still Time to Fill Out Our Surveys! Click on the Title or Scan the QR Code

**\*for Kaska Citizens Only**  
**\$50.00 per survey**

Kaska IPCA  
General Survey



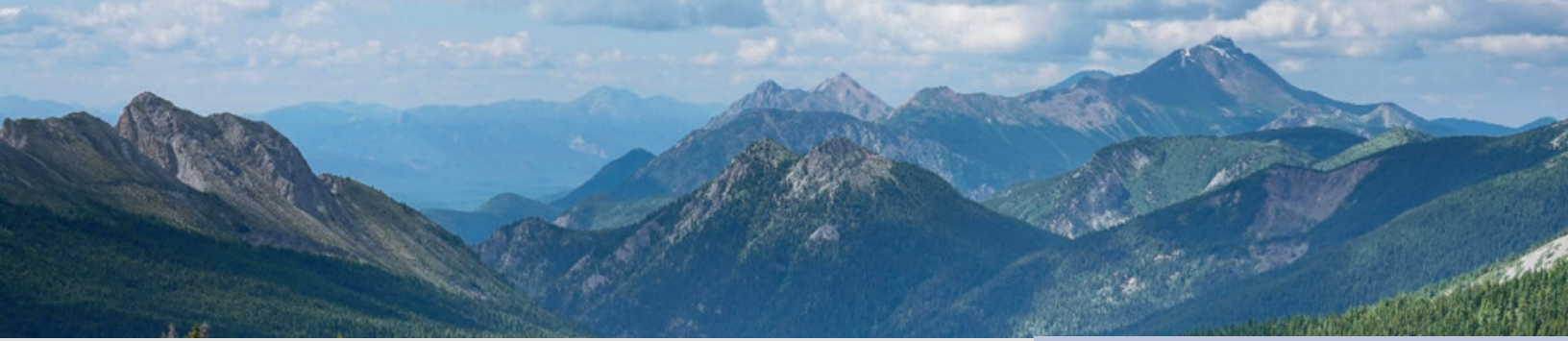
Conservation  
Economy  
Survey



Allowable Uses  
Survey

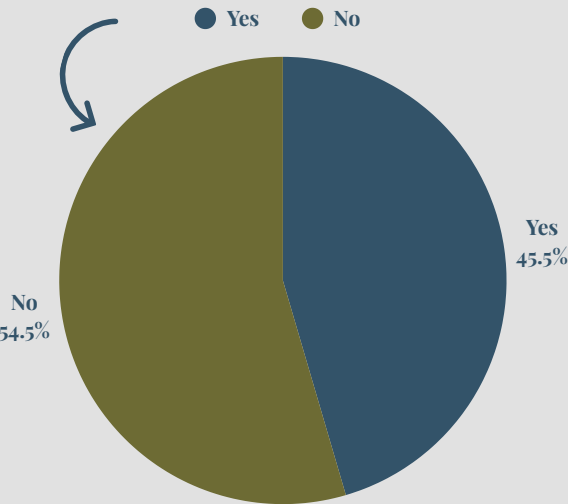




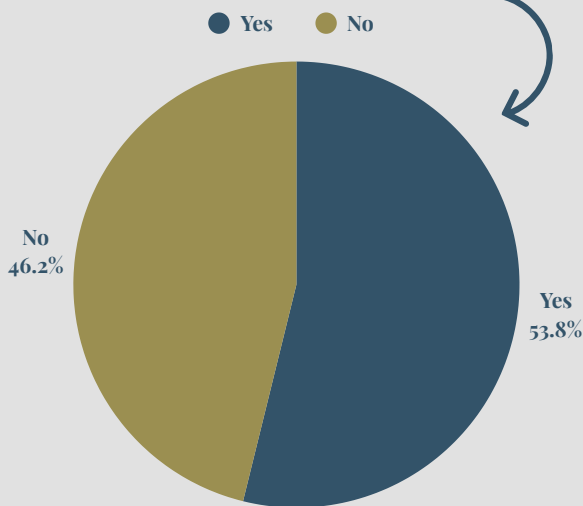


# What We Heard Survey Results

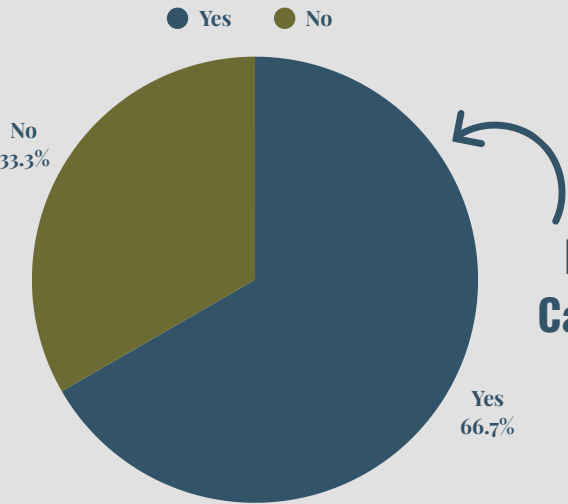
Do you Support  
Licenced Hunting in DKK?



Do You Support  
Public Boat  
Launches in DKK?



Do You Support  
Catch and Release  
Fishing in DKK?



To Review All Survey Results  
Please Check Out the QR  
Code Below

Allowable Uses  
Survey



Kaska IPCA  
General Survey



Conservation  
Economy  
Survey





# Community Engagement Sessions

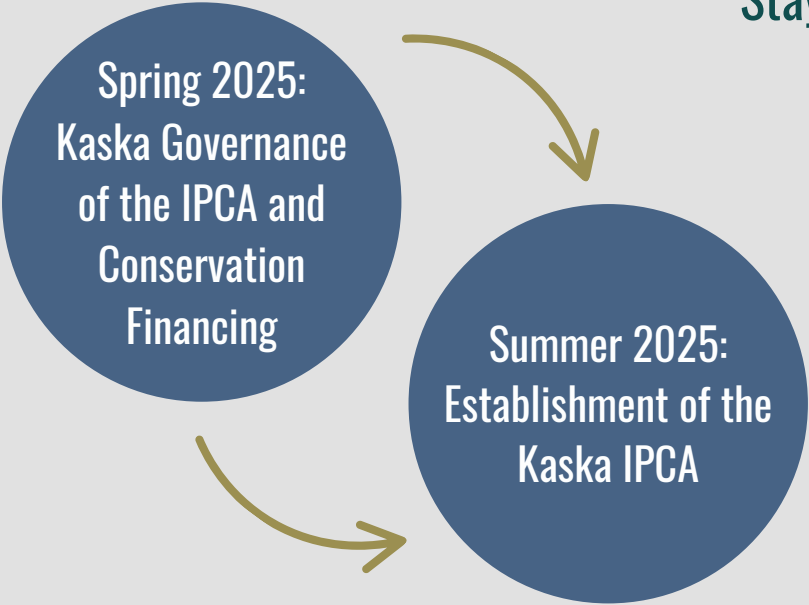
Over the spring and summer, the DKI team will be visiting Kaska communities to continue the conversation about Dene K'éh Kusān. These in-person sessions are a vital opportunity for us to listen, learn, and gather your feedback on the establishment of the IPCA. Your voices, stories, and ideas are central to shaping a stewardship approach that reflects the values, needs, and vision of our Nation.

We know that not everyone can attend in person, so we'll also be continuing our online webinar series throughout May and June. These sessions are another way to stay informed, ask questions, and share your thoughts—whether you're at home or tuning in from afar. Stay tuned for upcoming dates and registration details on our website and social media channels.

Together, through ongoing dialogue and collaboration, we're building something that will serve our people and the land for generations to come.



Stay tuned for online community engagement opportunities for our Kaska members



Dena Kayeh Institute

Dene K'éh Kusān  
ALWAYS WILL BE THERE

Dene K'éh Kusān  
Webinar Series





## Dane Nan Yé Dāh Network Update

In 2025 so far, the Land Guardian Team in Daylu has been taking part in a variety of training, workshops and fieldwork. Here are some of the highlights of the spring so far and what lies ahead for the summer and fall.

### Workshops and Training:

- Proposal Writing and Project Management Workshop (Whitehorse)
- Swift Water Rescue and Ice Safety Training (Whitehorse)
- Seed the North Visit and Training on Willow Transplanting for Fire-Burned Areas in the Territory (Daylu)

### Field Work:

- Kaska Climate Station Visit – Data Downloads and Station Troubleshooting
- Deployment of Bird Acoustic Recorder Units (ARUs) by key lakes and wetlands
- Monthly Water Sampling at Identified Key Sites
- Educational Fieldwork with Denetia School



Collecting Willows for Transplanting  
in Blue River Burn Area







## Upcoming Training and Field Work:

## Drilling Holes for the Bird ARUs

- May 21st-June 1st Kaska Stewardship Program at Frances Lake
- June 4th-7th Wilderness 1st Aid Recertification
- June 9th-13th Lake Sampling with Yukon Government. Our Guardians will be expanding the monitoring program to include lake sampling, collecting data on lake health, and climate change.
- June 16th-20th Monitoring with UBC around lake environments.
- June 25th-27th Invasive plant surveys in the Liard Hotsprings area.



## WE ARE HIRING

\* YOUTH POSITION AVAILABLE \*  
WE ARE LOOKING TO HIRE **ONE**  
ENTHUSIASTIC YOUTH TO JOIN OUR TEAM.



**Job Posting: May 15, 2025**

**Job Closing: May 28, 2025**

**Job Term: June 15, 2025  
to August 15, 2025**



### JOIN OUR TEAM

Submit your resume  
by May 28, 2025 to  
Executive Director  
Corrine Porter at  
[denakayeh@gmail.com](mailto:denakayeh@gmail.com)







## DKI Initiatives - Kaska Land Stewardship Certificate Program

This spring, the Dena Kēyeh Sōgadze'ī (We are Caring for Dena Country) Kaska Land Stewardship Certificate Pilot Program will begin!

DKI has partnered with the Dechinta Centre for Research and Learning to jointly deliver this innovative land-based program. The first two UBC-accredited courses are INLB 210: Kaska Dena Self-Determination and INLB 220: Dena Kēyeh.

The program will take place this May at Tu Cho (Frances Lake), where students will gather alongside Elders, knowledge holders, and community members. Together, they will share stories, learn on the land, and build the foundations of Kaska stewardship grounded in Dena values.

We're excited to see this program come to life on the land. It's about more than just education—it's about reclaiming relationships to Dena Kēyeh and building pathways for future generations.



**DECHINTA**  
Centre for Research and Learning

